



# E300

ALUMINUM SERIES

Single Hung | Double Hung | Fixed



Product Material  
**Aluminum**











Frame Depth  
**3 1/4"**



Rating  
Single Hung: CW50  
Double Hung: CW50  
Fixed: AWP50/CW70

1008 S. Fourth  
Champaign, IL  
General Contractor: Wells & Wells  
Architect: Myefski Architects, Inc.  
Comm. Window Dist.: Kirchner Bldg.



 <b>Design Pressure</b> Hung: 50 Fixed: 50 / 70	 <b>U-Value*</b> Hung: .35 - .40 Fixed: .25 - .31
 <b>Air Infiltration</b> Hung: <.30 Fixed: <.10	 <b>SHGC*</b> Hung: .13 - .30 Fixed: .16 - .37
 <b>Water Resistance</b> Hung: 7.5 Fixed: 10	 <b>CR*</b> Hung: 45 - 50 Fixed: 44 - 58
 <b>OITC<sup>x</sup></b> Hung: Contact Quaker Fixed: Contact Quaker	 <b>STC<sup>x</sup></b> Hung: Contact Quaker Fixed: Contact Quaker
*-Ranges based on multiple Low-E/Argon I.G. combinations x-Ranges based on multiple I.G. combinations	

## FEATURES:

- ▶ Architectural grade aluminum frame
- ▶ Thermally-broken frame and sash with pour-and-debridge technology
- ▶ 1" insulating glass
- ▶ Dual locking systems on Double Hung model with gravity locks on bottom sash and swivel locks at the meeting rail
- ▶ Gravity lock hardware on bottom sash of Single Hung models
- ▶ Block & Tackle balance system
- ▶ Tilt-in sash system with stainless steel pivot pins
- ▶ 30+ "Quick-Pick" colors, with unlimited custom colors available
- ▶ Standard High-Performance 2604 Powder Paint Finish (an FGIA Specification)
- ▶ Optional Upgrade to 2605 Powder Paint Finish (an FGIA Specification)
- ▶ Extruded aluminum screen

[www.QuakerCommercialWindows.com](http://www.QuakerCommercialWindows.com)

Information listed is deemed accurate as of date shown. Quaker Windows reserves the right to change or discontinue any product, feature or option without notice.

March, 2023 V5



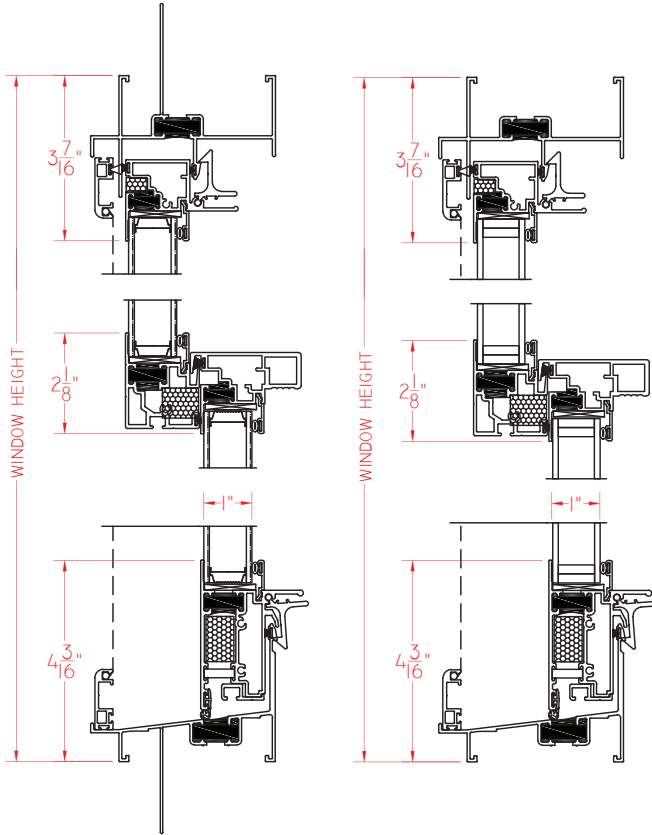
# E300

ALUMINUM SERIES

## E300 Series Hung (CW50)

Shown with integral nailing fin

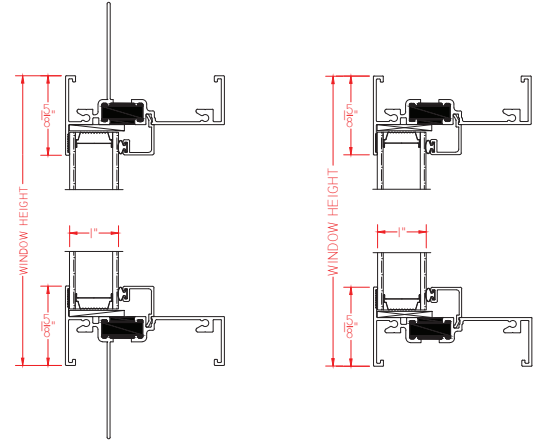
Shown without integral nailing fin



## E300 Fixed (AW50/CW70)

Shown with integral nailing fin

Shown without integral nailing fin



Tyndall at Robertson Hill  
Austin, TX  
Developer: Momark Development  
General Contractor: White Construction  
Architect: Humphreys & Partners  
Comm. Window Dist.: McInerney & Assoc.



[QuakerCommercialWindows.com](http://QuakerCommercialWindows.com)  
1-800-347-0438  
[Commercial@quakerwindows.com](mailto:Commercial@quakerwindows.com)